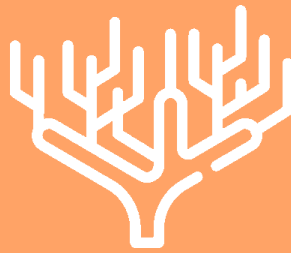


Pacific Marine Technologies

Oily Water Treatment



«CORAL»



15PPM BILGE SEPARATOR (FEATURES):

- The installation of gravity-type pre-treatment device maximizes separation efficiency when heavy oil and much sludge are flown in.
- Its installation is convenient and its operation is easy.
- Its structure is simple and it is small size when compared to capability.
- Its overhaul for filter replacement and internal cleaning is easy.
- As it uses a membrane method in the final treatment phase, it minimizes oil content in the test water which will contribute to prevention of sea pollution.

Coral A Type



Coral B Type



Type	Capacity, m ³ /h	Length,mm	Width, mm	Height, mm	Weight, kg		Pipe dia
					Dry	Wet	
Coral-0.2/A	0.2	300(730)	300 (560)	1500 (1590)	185	265	DN20
Coral-0.3/A	0.3	360(800)	360 (560)	1690 (1780)	220	340	DN20
Coral-0.5/A	0.5	360(800)	360 (560)	1840 (1940)	230	360	DN25
Coral-1/A	1	440(880)	440 (700)	1810 (1900)	320	545	DN25
Coral-1/B	1	1180(1750)	440 (750)	1540 (1600)	430	730	DN25
Coral-2/B	2	1550(2150)	640 (805)	1640 (1700)	590	1120	DN25
Coral-3/B	3	1750(2530)	740 (910)	1790 (1850)	700	1450	DN40
Coral-5/B	5	1900(2683)	840 (1093)	1945 (2005)	756	1565	DN40

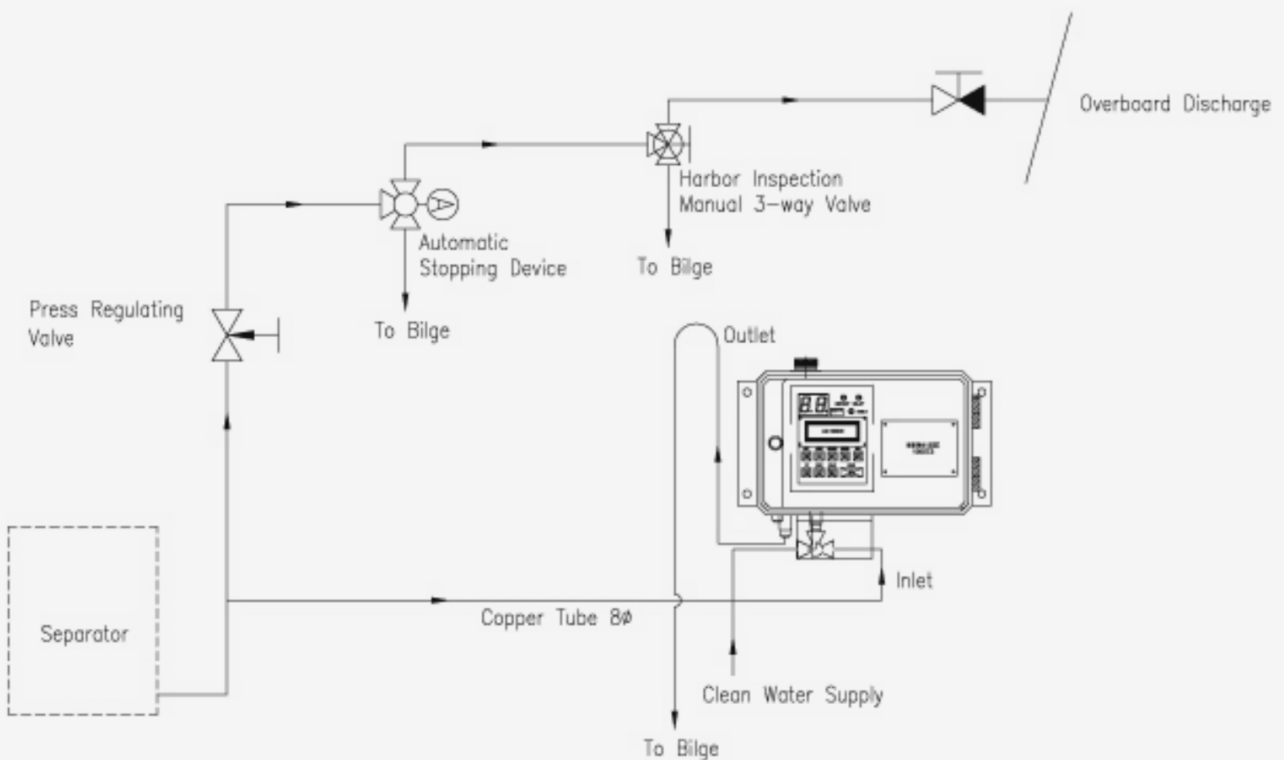
Option item: 15ppm Bilge Alarm, Bilge Pump

15PPM BILGE ALARM:

IMO Resolution MEPC 107(49)



15PPM BILGE ALARM PIPING DIAGRAM



15PPM BILGE ALARM:

IMO Resolution MEPC 107(49)

OVERVIEW

- Measurement range: 0~30ppm
- Measurement precision: 15ppm±5ppm (IMO standard)
- Instant alarm relay: 15ppm (Factory setting)
- Power source: 230VAC 50Hz
- Output: 4~20mA
- Test water pressure: 0.1~3kg/cm
- Test water flow rate: ~1l/min
- Size: 285 x 190 x 90

PRINCIPLE OF MEASUREMENT

When the test water passes through a measurement module in the main body, this test water flow inside the quartz glass pipe.

From the side of the glass pipe, an infrared rays light emitting device projects the rays and an oil droplet in test water absorbs infrared rays.

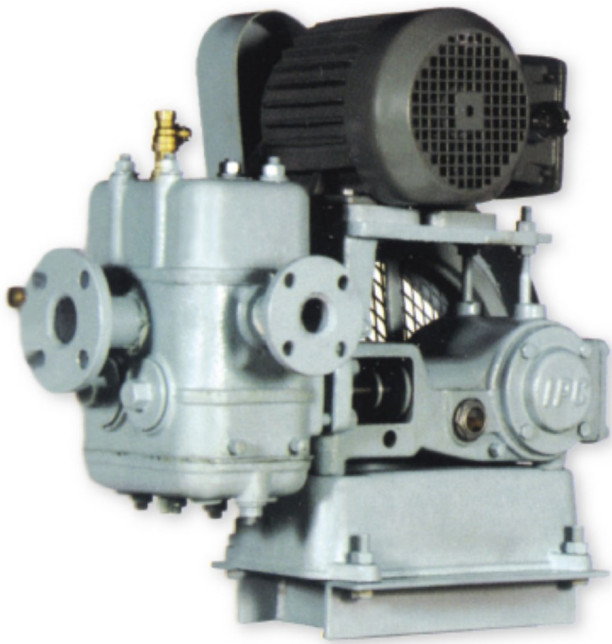
By measuring this absorption ratio, it displays oil density.

FEATURES AND BENEFITS

1. It continuously measures the density of insoluble oil distributed in the test water.
2. It uses bilge discharge water partially. In its main body, measurement and instrumentation are performed and for this, separate device is not required.
3. As there is no complicated operation part, its handing is simple and maintenance is easy.
4. As allowable oil density is set as 15ppm, other adjustment is not required.
5. As it does not measure other component except oil, its measurement is outstanding.
6. A terminal for internal record, terminal for discharge and recycle and terminal for external alarm are prepared.
7. The water-proofing, dust-proofing and rust-proofing effect of main body are outstanding.

BILGE AND SLUDGE PUMP:

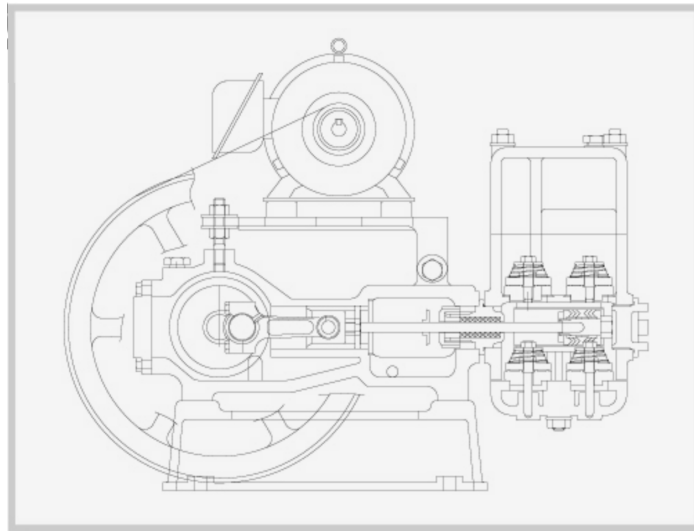
(Piston Type)



FEATURES AND BENEFITS

- As it is a capacity-type pump, it is suitable for oil-water separation type pump and sludge transmission pump.
 - As it rotates slowly, its life cycle is relatively outstanding when compared to other product.
 - As it has simple structure, its disassembly, assembly and operation are easy.
 - Compared to mono pump, its size is small to its capacity.
- Therefore its installation is simple and easy.

SECTION DRAWING:



Model	Capacity, m ³ /h	RPM	Motor			Flange		Weight, kg
			Output, kW	Voltage, V	Pole	inlet	outlet	
Type 1	0.15, 0.2, 0.3	420	0.4	230/400	4p	5k DN15	5k DN15	39
Type 2	0.5, 1, 2	280	0.4, 0.75(2)	230/400	4p	5k DN32	5k DN25	66
Type 3	3, 5	220	1.5	230/400	4p	5k DN50	5k DN40	115
Type 4	10	240	0.2	230/400	4p	5k DN65	5k DN50	175

CONTROL AIR DRYER:



FEATURES AND BENEFITS

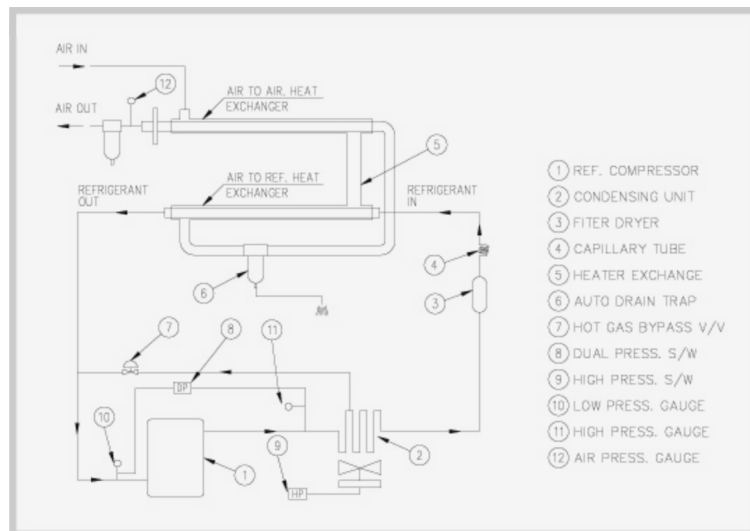
As this device uses a specially developed evaporator and pressure with good performance, its heat efficiency is outstanding.

As a pressure regulation valve is attached to inside, it is not frozen regardless of environmental temperature.

If there is any problem occurred during air dryer operation, an automatic alarm system operates to awaken handler's attention and solve the problem immediately.

As is a low fin-type, its passage resistance is low and heat transmission is good which processing efficiency is outstanding.

PIPING DIAGRAM:



Model	Capacity, m ³ /h	Length, mm	Width,, mm	Height, mm
Type 1	60~100	800	450	870
Type 2	120~150	800	450	870
Type 3	160~200	850	600	1065
Type 4	400	1000	800	1475

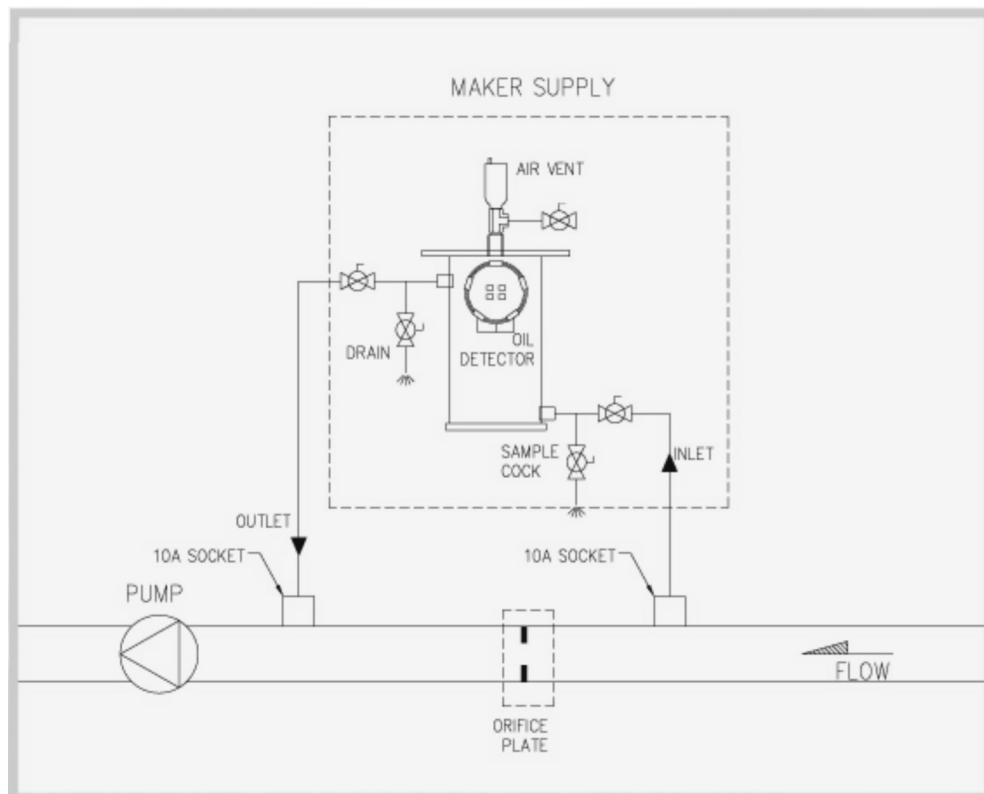
OIL DETECTOR:



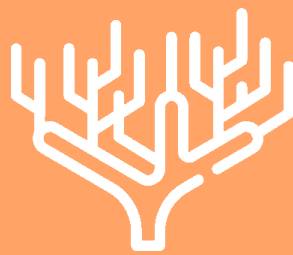
FEATURES AND BENEFITS

This device is installed in the cooling water line of ship and designed to detect oil in cooling water. This system consists of oil detection pot, capacitive compact switch and control unit.

PIPING DIAGRAM:



Pacific Marine Technologies



Office 10, Tulonskaya Alley, Kronstadt, 197762

E-mail: inquiry@pacific-mt.ru